



MICHIGAN DEPARTMENT OF  
ENVIRONMENT, GREAT LAKES, AND ENERGY

# GENESEE COUNTY SOLID WASTE COMMITTEE PFAS QUESTIONS

---

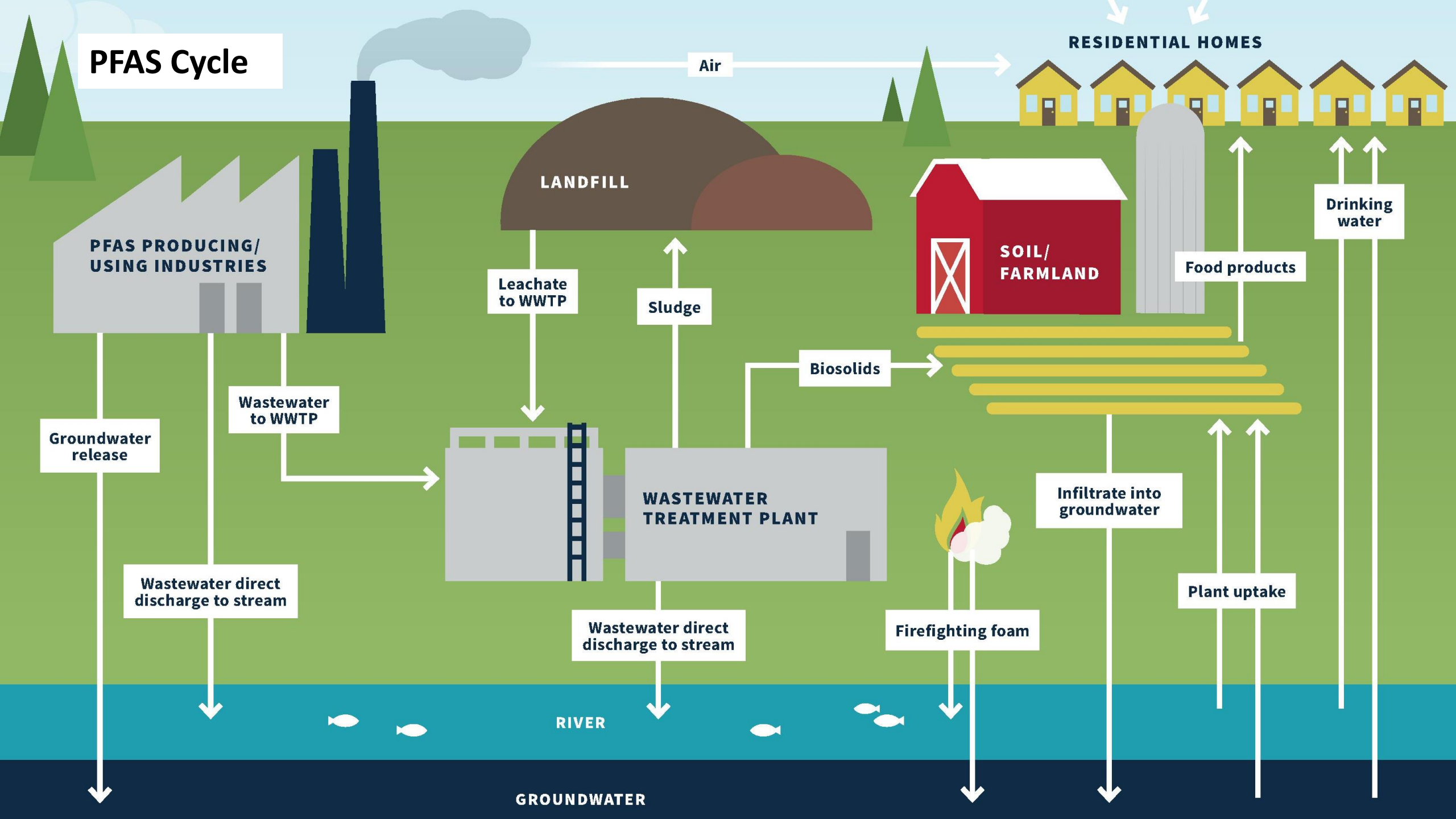
Jim Arduin  
Geology Coordinator  
Materials Management Division  
517-614-7434 | [Arduinj@michigan.gov](mailto:Arduinj@michigan.gov)

# Genesee County Solid Waste Committee Questions

## PFAS Questions:

- How is it treated as it moves through biosolids incinerators?
- What is currently happening with PFAS in biosolids? What does the future hold across the State?
- How is it managed when it goes through facilities like the Great Lakes Water Authority biosolids drying facility where it is made into pellets and then fertilizer?
- What is the degree to which land application, incinerator, drying, or Type III landfills may be diminished options?
- How will PFAS be handled in the long term?
- What are EGLE's latest thoughts on PFAS?

# PFAS Cycle



# Current PFAS Criteria in Michigan

---

# PFAS Criteria in MI – Groundwater

Natural Resources &  
Environmental  
Protection Act (NREPA)  
- Part 201

PFAS	Groundwater Protection Criteria (PPT)
PFOA	8
PFOS	16
PFNA	6
PFHxA	400,000
PFHxS	51
PFBS	420
HFPO-DA	370

# PFAS Water Quality Values in MI – Surface Water

## Natural Resources & Environmental Protection Act (NREPA) - Part 31

PFAS	Concentration (PPT)
PFOA (Drinking Water Source)	66
PFOA	170
PFOS (Drinking Water Source)	11
PFOS	12
PFBS (Drinking Water Source)	8,300
PFBS	670,000

# Health Based Air Screening Levels in MI

- ITSL for PFOS and PFOA (additive)  $0.07 \mu\text{g}/\text{m}^3$  – 24 hour averaging time
- ITSL for 6:2 FTS  $1 \mu\text{g}/\text{m}^3$  – annual averaging time

# Note Regarding Biosolids

No criteria, but screening levels have been developed for land application of biosolids



# Biosolids Screening Levels/WWTP tiers

- Based on the PFOS results, the WWTPs are placed in the following tiers:
  - Equal to or Below 20 ppb
  - 21 ppb – 50 ppb
    - *Recommended* to sample effluent and identify sources
  - 51 ppb -124 ppb
    - *Required* to sample effluent, identify sources, and reduce land application rate\*
  - Equal to or Above 125 ppb
    - Deemed Industrially Impacted and cannot be land applied

# Genesee County Solid Waste Committee Questions

## PFAS Questions:

- **How is it treated as it moves through biosolids incinerators?**
- What is currently happening with PFAS in biosolids? What does the future hold across the State?
- How is it managed when it goes through facilities like the Great Lakes Water Authority biosolids drying facility where it is made into pellets and then fertilizer?
- What is the degree to which land application, incinerator, drying, or Type III landfills may be diminished options?
- How will PFAS be handled in the long term?
- What are EGLE's latest thoughts on PFAS?

# Genesee County Solid Waste Committee Questions

## PFAS Questions:

- How is it treated as it moves through biosolids incinerators?
- **What is currently happening with PFAS in biosolids? What does the future hold across the State?**
- How is it managed when it goes through facilities like the Great Lakes Water Authority biosolids drying facility where it is made into pellets and then fertilizer?
- What is the degree to which land application, incinerator, drying, or Type III landfills may be diminished options?
- How will PFAS be handled in the long term?
- What are EGLE's latest thoughts on PFAS?

# Genesee County Solid Waste Committee Questions

## PFAS Questions:

- How is it treated as it moves through biosolids incinerators?
- What is currently happening with PFAS in biosolids? What does the future hold across the State?
- **How is it managed when it goes through facilities like the Great Lakes Water Authority biosolids drying facility where it is made into pellets and then fertilizer?**
- What is the degree to which land application, incinerator, drying, or Type III landfills may be diminished options?
- How will PFAS be handled in the long term?
- What are EGLE's latest thoughts on PFAS?

# Genesee County Solid Waste Committee Questions

## PFAS Questions:

- How is it treated as it moves through biosolids incinerators?
- What is currently happening with PFAS in biosolids? What does the future hold across the State?
- How is it managed when it goes through facilities like the Great Lakes Water Authority biosolids drying facility where it is made into pellets and then fertilizer?
- **What is the degree to which land application, incinerator, drying, or Type III landfills may be diminished options?**
- How will PFAS be handled in the long term?
- What are EGLE's latest thoughts on PFAS?

# Genesee County Solid Waste Committee Questions

## PFAS Questions:

- How is it treated as it moves through biosolids incinerators?
- What is currently happening with PFAS in biosolids? What does the future hold across the State?
- How is it managed when it goes through facilities like the Great Lakes Water Authority biosolids drying facility where it is made into pellets and then fertilizer?
- What is the degree to which land application, incinerator, drying, or Type III landfills may be diminished options?
- **How will PFAS be handled in the long term?**
- What are EGLE's latest thoughts on PFAS?

# Genesee County Solid Waste Committee Questions

## PFAS Questions:

- How is it treated as it moves through biosolids incinerators?
- What is currently happening with PFAS in biosolids? What does the future hold across the State?
- How is it managed when it goes through facilities like the Great Lakes Water Authority biosolids drying facility where it is made into pellets and then fertilizer?
- What is the degree to which land application, incinerator, drying, or Type III landfills may be diminished options?
- How will PFAS be handled in the long term?
- **What are EGLE's latest thoughts on PFAS?**

# Caveat

- Data continues to be gathered and research continues to occur. Strategies will likely be modified over time.
- EPA's roadmap states that they expect to finalize risk assessments for PFOA and PFOS in biosolids by winter 2024.
  - This and other final actions by the federal government may result in changes to our programs.



# Questions?

---

# Additional Information

---

- **MPART:** <https://www.michigan.gov/pfasresponse/>
- **Michigan Biosolids PFAS- related information and links:** [EGLE Biosolids PFAS Webpage](#)
- **MPART Workgroups:** [MPART Workgroups \(michigan.gov\)](#)

Michigan Department of  
**Environment, Great Lakes, and Energy**

800-662-9278

Michigan.gov/egle



Follow us at: [Michigan.gov/egleConnect](https://Michigan.gov/egleConnect)